



Assortment

PREMIUM QUALITY frozen seafood !

HOTTLET FROZEN FOODS NV
www.hottlet.be





Our certificates



ASC Registration number
ASC-C-00314

ASC is an international label for sustainable seafood from aquaculture/growth. The label guarantees that the seafood was grown with the lowest possible impact on the environment and according to strict rules; and also traceable throughout the chain.



MSC Registration number
MSC-C-52790

MSC is an international label for sustainable seafood from fishery. The label guarantees that the seafood was caught with respect for man and nature; and also traceable throughout the chain.





Your contact persons

Commercial service:

Sara Augustijnen

Chantal Willocx

Karolina Radecka

Maaïke Horemans

Account managers (photo):

Louis Hottlet

Stéphane Keusters

Jean Michel Devillé

Anoek Valkenborghs

Steven De Wachter

Stay informed, visit www.hottlet.be, our facebook page

or through our online order platform for wholesale companies:
www.shop.epic.be



<https://hottlet.be>



<https://www.facebook.com/HottletFrozenFoodsEpicSeafood>



<https://be.linkedin.com/company/hottlet-frozen-foods-nv>

Opening hours office:

8h00-16h00

Opening hours coldstore:

8h00-12h00 & 12h30-15h00





Hottlet has been active in the seafood business since 1970. In the meantime our products are distributed all over Europe, with a focus on our own brands EPIC SELECT and EPIC. These brands guarantee a high quality as a result of the severe selection criteria as well as the vast experience within the company.

We are proud to propose our product range. Our products have an excellent reputation, among others thanks to stern demands and severe entrance checks.

Hottlet Frozen Foods is aiming to supply its customers with recognizable quality and a correct product. The quality of our products is also reflected in the attractive packaging and the excellent service. In this manner, our brands EPIC SELECT and EPIC have grown into leading brands for the professionals in Europe.

HFF is still a family business and that reflects also in the firm and in a consistent sales team. The sales team is available to provide you with the best service. We try to act and react quickly and to be of service with the highest quality against an honest price.



Table of contents



Shrimps	7
Fingerfood	15
Skewers	23
Seafood cocktail & Cephalopods	27
Fish	35
Shellfish / Crustaceans	49
Surimi	57
Other products	59
Packaging	63





Shrimps



Black Tiger shrimps

REF = HOBT

Penaeus monodon
2/4 up to 21/30 pc/unit

Box 800 g, semi-iqf

Black Tiger shrimps, body peeled

REF = HOBTBP

Penaeus monodon
8/12 up to 16/20 pc/unit
Body peeled: deveined, peeled except
for tail & head

Box 750 g, semi-iqf



Black Tiger shrimps, easy peel

REF = HOBTEP

Penaeus monodon
13/15 and 16/20 pc/unit
Deveined, back side cut open to peel
easily

Box 750 g, semi-iqf



Black Tiger shrimps, Nigeria

REF = HOOT

Penaeus monodon
4/6 pc/kg
Frozen on board, wild catch

Box 2 kg





Argentine red shrimps

REF = HOARG

Pleoticus muelleri

10/20 pc/kg

Super fresh and excellent quality!

Coldwater shrimps, wild catch, raw

Box 2 kg

Carabinero shrimps

REF = CAR

Aristaeopsis edwardsiana

08/12 pc/kg

Frozen on board, raw

Box 800 g



Vannamei shrimps, cooked

REF = HOCK

Penaeus vannamei

30/40 and 40/60 pc/unit

Box 1 kg

Vannamei shrimps

REF = HOVN

Penaeus vannamei

21/30 up to 41/50 pc/unit, box 800g

21/30 up to 41/50 pc/kg, REAL COUNT,

box 2 kg

Frozen in super fresh conditions for superior taste!





Headless Black Tiger shrimps

REF = HLBT

Penaeus monodon
6/8 up to 16/20 pc/360 g
16/20 pc/454 g (real count)

Polybag 800 g

Headless Black Tiger Easy Peel shrimps

REF = HLBTEP

Penaeus monodon
6/8 up to 16/20 pc/360 g
13/15 or 16/20 pc/454 g (real count)
Deveined, back side cut open to peel easily

Polybag 800 g



REAL COUNT Headless Black Tiger shrimps block

REF = HLBTBL

Penaeus monodon
8/12 up to 26/30 pc/454 g

Box 1 block of 1,44 kg



Headless vannamei shrimps

REF = HLVN

Penaeus vannamei
8/12 and 13/15 pc/360 g

Polybag 800 g





Headless vannamee Easy Peel shrimps

REF = HLVNEP

Penaeus vannamei
8/12 up to 26/30 pc/360 g
16/20 pc/454 g (real count)
Deveined, back side cut open to peel easily

Polybag 800 g

Headless Argentine red Easy Peel shrimps

REF = HLARGE P

Pleoticus muelleri
8/12 and 13/15 pc/360 g
16/20 pc/454 g (real count)
Deveined, back side cut open to peel easily

Polybag 800 g



Headless freshwater Easy Peel shrimps

REF = HLFWEP

Macrobrachium rosenbergii
U/5 up to 8/12 pc/360 g
Deveined, back side cut open to peel easily

Polybag 800 g





Peeled vannamei shrimps

REF = PD

Penaeus vannamei
8/12 up to 71/90 pc/360 g (deveined)

Polybag 400 g (only size 26/30)
Polybag 800 g

Peeled Black Tiger shrimps

REF = PDBT

Penaeus monodon
8/12 up to 31/40 pc/340 g (deveined)

Polybag 750 g



Peeled shrimps, pull deveined

REF = PD5 16/20P

Penaeus vannamei
16/20 pc/360 g (deveined)

Carton 5kg, bulk

Peeled, tail-on vannamei shrimps

REF = PDTO

Penaeus vannamei
8/12 up to 31/40 pc/360 g (deveined)
16/20 pc/454 g (real count) (deveined)

Polybag 800 g



Peeled shrimps



Peeled, tail-on vannamei shrimps, cooked

REF = PCTO

Penaeus vannamei
16/20 à 31/40 pc/360 g (deveined)

Polybag 800 g

Sushi Ebi shrimps, cooked

REF = SU EBI

Penaeus vannamei
3L (8,1-8,5 cm), 4L (8,6-9,0 cm), 5L (9,1-9,5 cm) Peeled, deveined, cooked and stretched, tail-on

30 pcs/ tray, vacuum
3L = 185 g or 4L = 206 g or 5L = 256 g



Nobashi Ebi shrimps, raw

REF = NOBA

Penaeus vannamei
13-14 cm/pc
Peeled, deveined and stretched, tail-on

30 pc/tray (360 g), vacuum

Broken vannamei shrimps

REF = PD BKN

Penaeus vannamei
Broken
Peeled, deveined, raw

Carton 4 x 2,5 kg bulk





Peeled vannamei shrimps butterfly

REF = PDTOBF 26/30

Penaeus vannamei
26/30 pc/360 g
Peeled, deveined, tail on

Polybag 800 g

Peeled seawater shrimps, cooked

REF = PC ... R/V/RB

Parapenaeopsis stylifera / *Penaeus vannamei* / *Metapenaeus dobsoni*
R+RB = undeveined, extra red,
61/70 up to 300/500 pc/360 g
V = deveined, 31/40 up to 300/500 pc/360 g

Polybag 800 g





Fingerfood



Crispy shrimps torpedo style

REF = CRTP

Penaeus spp.
Breaded pto shrimp
13/15 up to 31/40 pc/lb
Origin: Indonesia

Box 1 kg (to deep-fry)

Crispy shrimps butterfly style

REF = CRBF

Penaeus spp.
Breaded pto shrimp
16/20 up to 31/40 pc/lb
Origin: Indonesia

Box 1 kg (to deep-fry)



Filo shrimps

REF = FILO

Penaeus vannamei
Pto shrimp in filo pastry
± 100 pcs of ± 10 g

Box 1 kg (to deep-fry)

Oriental mix

REF = ORIMIX

Penaeus vannamei
40 pcs = filo shrimps, money bags,
shrimp rolls, butterfly & torpedo shrimps

Box 500 g (to deep-fry)





Scampi fritti

REF = SFRITI

Penaeus vannamei

55 % batter

± 90-120 pcs/kg

Brand = Ibercook

Polybag 1 kg (to deep-fry or in the oven)

Scampi fritti

REF = SFRIT

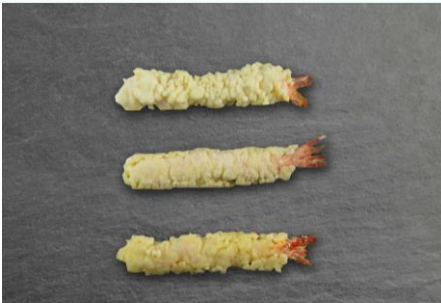
Penaeus vannamei

60 % batter

± 90-120 pcs/kg

Brand = Epic

Polybag 1 kg (to deep-fry)



Tempura torpedo shrimps

REF = TEMP

Penaeus vannamei

Tempura battered pdto shrimp

50 % batter

25 g/pc – 10 pieces

Tray 250 g (to deep-fry or in the oven)

Ebi fry torpedo shrimps

REF = EBI FRY

Penaeus vannamei

Battered pdto shrimp

60 % batter

25 g/pc – 10 pieces

Tray 250 g (to deep-fry)





Potato shrimps

REF = POTATO

Penaeus vannamei
Potato wrapped shrimp
30 g/pc

Tray 300 g (to deep-fry)



Spring rolls

REF = SPRRE

Pastry rolls with vegetable stuffing
60 pcs of 15 g or 18 pcs of 50 g

Box 900 g (to deep-fry)

Breaded onion rings

REF = ONIONR

Formed rings (pre-fried)
55-67 pc/kg
Brand = Aviko

Polybag 1 kg (to deep-fry or oven preparation)



Curry trigons

REF = TRIGE

Pastry triangle with vegetable stuffing,
curry flavoured
60 pcs of 15 g

Box 900 g (to deep-fry)

Churros

REF = CHURROS

Lazo = pastry loops, 8-11 cm
30-40 pc/kg
Brand = Ibercook

Polybag 1 kg (to deep-fry)





Rabas

REF = RABAS

Dosidicus gigas

Breaded squid strips

70 % (Epic Select) or 65 % (MarNatura) squid

Polybag 1 kg (to deep-fry or oven preparation)

Squid tapas

REF = SQ TAPAS

Dosidicus gigas

Cooked and cut squid tentacles

2-6 cm/pc

Polybag 800 g



Calamares romana

REF = CRM

Illex spp. 60 or 70 % batter

Polybag 500 g (only for 70 % batter) or 1 kg (to deep-fry or oven preparation)

Dosidicus gigas 60 % batter (formed rings)

Polybag 500 g, 1 kg or 2 kg (to deep-fry)

Chipirones

REF = CHIP4

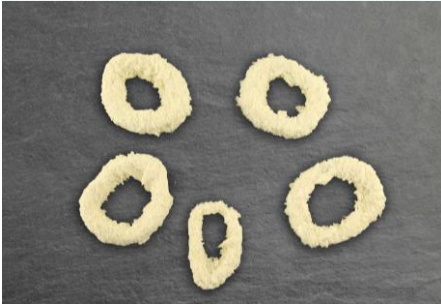
Loligo gahi

Lightly dusted baby squid

70 % squid

Polybag 1 kg (to deep-fry)





Panko squid rings

REF = DOSRP

Dosidicus gigas

Panko crumbed squid rings

60 % squid

Polybag 700 g



Muslitos – recipe WITHOUT wine

REF = SRMS

Nemipterus spp.

Breaded imitation crab claws

± 33 g/pc

Origin: China or India

Box 500 g (15 pcs), 800 g (24 pcs) or
1 kg (30 pcs) (to deep-fry)

Perlitas del mar

REF = SRPER

Nemipterus japonicus

Breaded imitation scallops

± 20 g/pc

Box 600 g (30 pcs) (to deep-fry)





Skewers

Shrimp skewers



Shrimp skewer 90 g

REF = SKE1 (sometimes available in ASC)

Penaeus vannamei
9/10 pcs/skewer, with pan handle
Pd shrimps single pierced

Polybag 900 g (10 skewers x 90 g)

Shrimp skewer 90 g

REF = SKE2 (sometimes available in ASC)

Penaeus vannamei
11/12 pcs/skewer, with pan handle
Pd shrimps single pierced

Polybag 800 g (9 skewers x 90 g)



Shrimp skewer 80 g

REF = SKN1

Penaeus vannamei
11/12 pcs/skewer
Pd shrimps single pierced

Polybag 800 g (10 skewers x 80 g)

Shrimp skewer 40 g

REF = SKE3

Penaeus vannamei
6 pcs/skewer, with pan handle
Pd shrimps double pierced

Polybag 800 g (20 skewers x 40 g)





Pangasius skewer 80 g

REF = SKPNG

Pangasius hypophthalmus
Skewer with pangasius, with pan handle

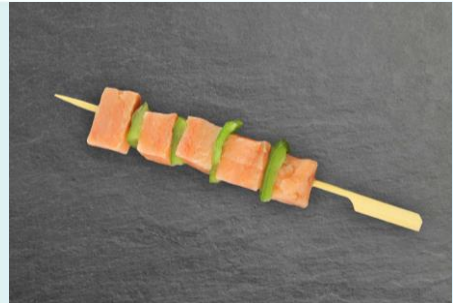
Polybag 800 g (10 skewers x 80 g), IWP

Salmon skewer 80 g

REF = SKSLMP (sometimes available in ASC)

Oncorhynchus gorboscha
Skewer with Pacific salmon and green pepper

Polybag 800 g (10 skewers x 80 g), IWP



Salmon/cod skewer 100 g

REF = SKSC

Oncorhynchus gorboscha, Gadus macrocephalus
Skewer with Pacific salmon, cod and green pepper

Polybag 800 g (8 skewers x 100 g), IWP





Provencal skewer 100 g

REF = SKPR

Loligo chinensis, Lethrinus lentjan,
Parapenaeopsis hardwickii
Skewer with squid, fish, shrimp, green
pepper, tomato and onion, with pan
handle

Polybag 800 g (8 skewers x 100 g), IWP



Seafood cocktail & Cephalopods

Seafood cocktail



Seafood cocktail Vietnam, deluxe

REF = MIX SELECT

Loligo chinensis, Octopus membranaceus, Paphia undulata, Parapenaeopsis hardwickii
Blanched: tentacles, rings & strips of loligo, and octopus, PUD shrimps 100/300 pc/lb
Cooked: clam meat

Polybag 800 g

Seafood cocktail

REF = MIX10

Loligo duvauceli, Illex argentinus, Mytilus chilensis, Paphia undulata, Octopus vulgaris, Solenocera crassicornis
Blanched: squid, peeled shrimps
Cooked: Chilean mussel meat, clam meat, octopus

Polybag 800 g





Loligo, cleaned

REF = SQWC (I)(V)

Loligo spp.

11/20 or 21/40 pc/kg

Origin: India or Vietnam

Polybag 800 g

Cuttlefish, cleaned

REF = CF

Sepia spp.

U/5 up to 61/up pc/kg

Polybag 800 g



Octopus, cleaned

REF = OCTS

Octopus vulgaris

1,2-2, 2-3 or 3-4 kg/pc

IWP in tray; ean 128

Origin Spain

Mastercarton 14 kg bulk

Baby octopus, cleaned

REF = BOCT

Octopus spp.

11/20 up to 61/up pc/kg

Polybag 800 g





Patagonian squid, uncleaned

REF = SQPAT

Loligo gahi

10-12 cm/pc

Skin-on, ink sac is still present

Polybag 800 g

Patagonian squid, uncleaned, no additives

REF = SQPATSF

Loligo gahi

10-12 cm/pc

Skin-on, ink sac is still present

Frozen on board

Box 1 kg



Patagonian squid, cleaned, no additives

REF = SQPATWC

Doryteuthis gahi

9-12 cm/pc

Tray 900 g



Squid tubes

REF = ILXT/D/N

Illex argentinus / *Dosidicus gigas* /
Nototodarus sloanii

U/5 pc/unit : polybag 700 g or 800 g

U/6 pc/unit : polybag 800 g

U/10 pc/unit : polybag 800 g

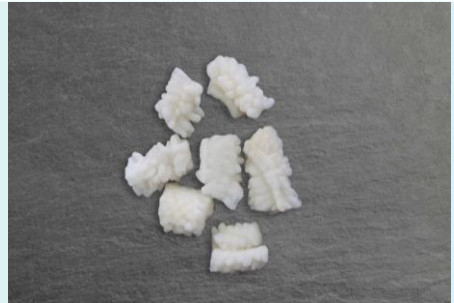
Cuttlefish matsukasa

REF = ILXDMAT

Dosidicus gigas

Blanched squid fillet, cut pineapple style
10-15 g/pc

Polybag 800 g



Squid tubes

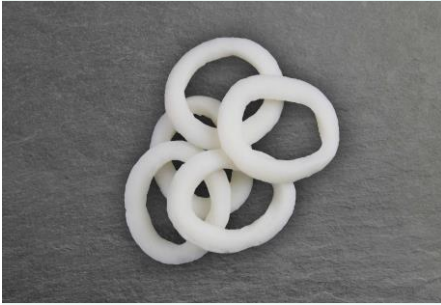
REF = SQT

Loligo duvauceli

20/40 pc/kg

Polybag 800 g





Squid rings, formed, big, pre-cooked
REF = DOSR

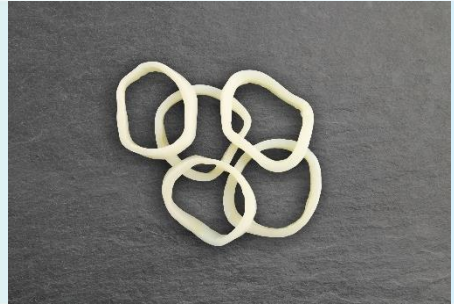
Dosidicus gigas
5-6 cm/pc

Polybag 800 g

Illex rings, big, raw
REF = ILXR(D)

Illex argentinus 3-7 cm/pc
Dosidicus gigas 4-9 cm/pc

Polybag 800 g



Loligo rings, small, blanched
REF = SQR BLA

Loligo duvauceli
170-310 st/unit

Polybag 800 g





Octopus tentacles, cooked

REF = OCTT

Octopus vulgaris
100-150 or 150-200 g/pc, cleaned,
tray 1,5 kg
2-3 pc/unit, cleaned,
bag 250 g, vacuum

Giant squid tentacles, cooked

REF = DOST

Dosidicus gigas
40-80 and 50-100 g/pc
12-18 and 8-13 pc/tray

Tray 800 g







Fish



Redfish skin-off/on

REF = FRF (SO)

Sebastes mentella
140-200 g/pc

Polybag 800 g

MSC Haddock loins

REF = MSC FHADL

Melanogrammus aeglefinus
130-180 g/pc
MSC certified

Polybag 800 g

NATURAL	100 %
TASTE	PURE
NO ADDITIVES	



Tilapia fillets

REF = FTIL (sometimes available in ASC)

Oreochromis niloticus
140-200 g/pc

Polybag 800 g

NATURAL	100 %
TASTE	PURE
NO ADDITIVES	

MSC Atlantic cod nuggets

REF = MSC FCODN

Gadus morhua
± 25 g/pc
MSC certified

Polybag 800 g

NATURAL	100 %
TASTE	PURE
NO ADDITIVES	





MSC Atlantic cod loins skin-on/-off

REF = MSC FCODL(SO)

Gadus morhua

150-200 g/pc

MSC certified

Polybag 800 g

NATURAL	100 %
TASTE	PURE
NO ADDITIVES	

Pacific cod loins

REF = FCODLP

Gadus macrocephalus

150-200 g/pc

Polybag 800 g

NATURAL	100 %
TASTE	PURE
NO ADDITIVES	



Tuna steaks

REF = FTNS

Thunnus albacares (yellowfin tuna)

140-190 g/pc

Polybag 800 g, IVP

NATURAL	100 %
TASTE	PURE
NO ADDITIVES	

Tuna steaks Premium

REF = FTNS P

Thunnus albacares (yellowfin tuna)

140-190 g/pc

Polybag 800 g





Hake panko nuggets

REF = FNUG

Merluccius productus
42/53 pc/kg, 60 % hake
Brand: Ibercook

Polybag 1 kg
(to deep-fry or oven preparation)

Pangasius fillets

REF = FPNG

Pangasius hypophthalmus
120-170 or 170-230 g/pc

Polybag 800 g



Pangasius fillets Nature

REF = FPNG 170UT

Pangasius hypophthalmus
170-230 g/pc

Polybag 800 g

NATURAL	100 %
TASTE	PURE
NO ADDITIVES	

Pangasius rolls

REF = FPNGM

Pangasius hypophthalmus
40-60 g/pc

Polybag 800 g

NATURAL	100 %
TASTE	PURE
NO ADDITIVES	





Pangasius loins 'Top Sol'

REF = FPNGT

Pangasius hypophthalmus
80-120 g/pc

Polybag 800 g

NATURAL	100 %
TASTE	PURE
NO ADDITIVES	

Pangasius steaks

REF = FPNGS

Pangasius hypophthalmus
6-7 middle parts + 1 tail part
Skin-on, bone-in, raw

Polybag 800 g

NATURAL	100 %
TASTE	PURE
NO ADDITIVES	



John Dory fillets, skin on, no additives

REF = FJD 150UTSO

Zeus faber
150-200 g/pc

Polybag 800 g



NATURAL	100 %
TASTE	PURE
NO ADDITIVES	

John Dory fillets skin on

REF = FJD SO

Zeus faber
100-150 or 150-200 g/pc

Polybag 800 g





Sardines

REF = FSAR

Sardina pilchardus
Whole, raw sardines
8/12 and 10/15 pc/kg

Polybag 1 kg

NATURAL	100 %
TASTE	PURE
NO ADDITIVES	

Yellowfin sole filets

REF = FYF (sometimes available in MSC)

Limanda aspera
85-140 g/pc

Polybag 800 g



Sea bass filets skin on

REF = FBAS 080SO

Dicentrarchus labrax
80-120 and 120-160 g/pc

Polybag 800 g

NATURAL	100 %
TASTE	PURE
NO ADDITIVES	



Yellowfin sole rolls

REF = FYFM (sometimes available in MSC)

Limanda aspera
40-60 g/pc

Polybag 800 g
Carton 4,5 kg bulk





Yellowfin sole/salmon rolls

REF = FYFSM

Limanda aspera, Oncorhynchus spp
40-60 g/pc

Polybag 800 g

Pacific salmon portions (Pink)

REF = FSAP (SO)

Oncorhynchus gorbuscha

Skinless : 120-150 g/pc

Skin-on : 120-150 g/pc and ± 130 g/pc

Polybag 800 g

NATURAL | **100 %**
TASTE | **PURE**
NO ADDITIVES



Pacific salmon portions (Chum)

REF = FSAPC

Oncorhynchus keta

120-150 g/pc

Polybag 800 g

NATURAL | **100 %**
TASTE | **PURE**
NO ADDITIVES

MSC Wokmix

REF = MSC WOKMIX

Oncorhynchus gorbuscha, Theragra chalcogramma/Gadus chalcogrammus, Limanda aspera
15-35 g/pc

Fish portions (Pink salmon 40%, Alaska pollack 30%, Yellowfin sole 30%), skinless, boneless

Polybag 800 g





Breaded plaice fillets

REF = FSCHP (A)

Pleuronectes platessa / Pleuronectes quadrituberculatus

130-170 g/pc - Fish/breading: 45/55
Breaded paired fillets, black skin-off

Mastercarton 5 kg



Northsea Plaice fillets

REF = FSCH

Pleuronectes platessa

120-160 g/pc

Paired fillets, black skin-off,
white skin-on

Polybag 800 g

NATURAL | 100%
TASTE | PURE
NO ADDITIVES



Hake fish fingers

REF = FFF

Merluccius spp.

30/40 pc/kg, breaded hake fingers

Fish/breading: 50/50 (H 1cm x W 2cm x L 8cm)

Polybag 1 kg

(to deep-fry or oven preparation)

Breaded hake fish burgers

REF = FBUR

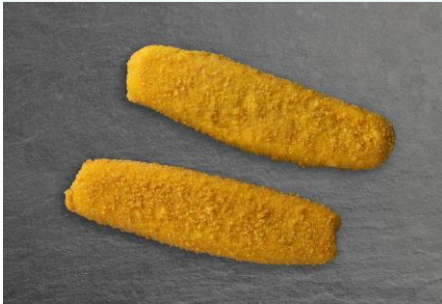
Merluccius productus

9-11 pc/kg

Polybag 1 kg

(to deep-fry)





Breaded hake

REF = FHAKEB

Merluccius productus
85 g/pc, 65 % fish

Polybag 1 kg
(to deep-fry or oven preparation)

Monkfish fillets

REF = FMON

Lophius litulon
100-200 g/pc

Polybag 800 g



Senegalese tonguesole, pan-ready

REF = FSOLPAC

Cynoglossus senegalensis, Cynoglossus canariensis
175-225 g/pc

Polybag 1kg



Atlantic tonguesole fillets

REF = FSOLR

Cynoglossus spp
80-120 g/pc, 2-3 pieces,
assambled, polybag 1 kg
or box 2 kg, IWP
60-90 or 80-120 g/pc,
1 piece, polybag
1 kg, IWP





Atlantic tonguesole rolls

REF = FSOLM

Cynoglossus senegalensis

80-120 g/pc

Skinless, boneless, assembled rolls (2-3 pcs)

Polybag 1 kg



NATURAL TASTE	100% PURE
NO ADDITIVES	

Anchovy, headed and gutted

REF = FAN HG

Engraulis encrasicolus

80/95 pc/kg; origin Greece

Polybag 900 g

NATURAL TASTE	100% PURE
NO ADDITIVES	



Anchovy

REF = FAN WR

Engraulis encrasicolus

Whole, raw anchovy

70/90 pc/kg; origin Greece

Polybag 900 g

NATURAL TASTE	100% PURE
NO ADDITIVES	



Anchovy fillets, skin-on, butterfly

REF = FAN BF

Engraulis encrasicolus

110/120 pc/kg, origin Greece

Polybag 900 g

NATURAL TASTE	100% PURE
NO ADDITIVES	





Sea bream fillets, skin-on

REF = FDOR SO

Sparus aurata
80-120 g/pc

Polybag 800 g

NATURAL TASTE	100 % PURE
NO ADDITIVES	



Red mullet fillets skin-on

REF = FRM

Parupeneus heptacanthus
15-40, 40-80, 80-120, 120-150 or
150-200 g/pc

Polybag 800 g



Norwegian smoked salmon trimmings

REF = FSMOSA TR

Salmo salar
Brand = Alexfish

Polybag 1 kg

Norwegian smoked salmon

REF = FSMOSA

Salmo salar
1,2-1,7 kg/salmon
Sliced, traditionally smoked, unique
taste.

Brand = Alexfish

Cardboard plate, in vacuum polybag
Carton = 10 pieces





Sand smelt

REF = FSMELT

Atherina boyeri
Whole, raw sand smelt
4-10 cm/pc, origin Greece



Polybag 900 g

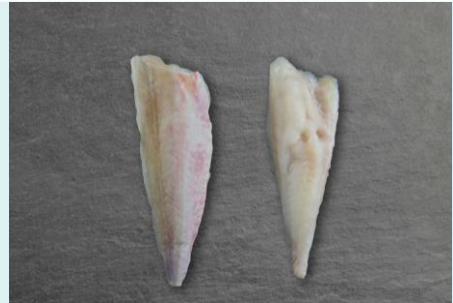
NATURAL	100 %
TASTE	PURE
NO ADDITIVES	

Red gurnard skin-on

REF = FRG

Lepidotrigla microptera
100-150 and 150-200 g/pc

Polybag 800 g



Alaska pollack portions

REF = FPOL

Theragra chalcogramma
40-50 g/pc

Polybag 800 g

NATURAL	100 %
TASTE	PURE
NO ADDITIVES	

Mahi Mahi portions

REF = FMAH

Coryphaena hippurus
140-190 g/pc

Polybag 800 g

NATURAL	100 %
TASTE	PURE
NO ADDITIVES	





Pike perch fillets skin-on

REF = FZAN

Stizostedion lucioperca
300-500 g/pc

Mastercarton 4 or 4,5 kg

NATURAL	100 %
TASTE	PURE
NO ADDITIVES	

Red snapper portions skin-on

REF = FSN UT

Lutjanus erythropterus
120-170 g/pc

Polybag 800g



NATURAL	100 %
TASTE	PURE
NO ADDITIVES	







Shellfish/crustaceans



Green shell mussels, blached

REF = GS HS

Perna canaliculus

30/45 pc/kg

Half shell

Box 1 kg

Chilean mussels, cooked

REF = MUS WS

Mytilus chilensis

40/60 or 60/80 pc/kg

Whole shell

Polybag 1 kg, vacuum



Chilean mussels, cooked

REF = MUS HS

Mytilus chilensis

40/60, 60/80 or 80/100 pc/kg

Half shell

Box 1 kg



Mussel meat, cooked

REF = MM

Chili, *Mytilus chilensis*

100/200, 200/300 or 300/500 pc/kg

Polybag 800 g





Baby clam meat, cooked

REF = BCL

Paphia undulata
800/1000 pc/kg

Polybag 800 g

Baby clams, cooked

REF = BCL W/HS

Meretrix lyrata
Whole shell: 40/60 or 60/80 pc/kg
Polybag 1kg, vacuum
Half shell: 60/90 or 90/150 pc/kg
Polybag 800 g



Whelks, cooked

REF = WHE10

Buccinum undatum
40/70 pc/kg
In shell

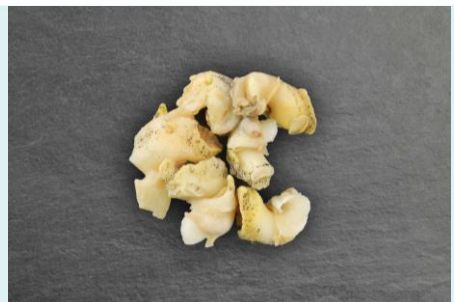
Polybag 1 kg

Whelk meat, cooked

REF = WHE

Buccinum undatum
90/140 pc/unit

Polybag 800 g





Razor clams, raw

REF = RAZOR

Ensis ensis
10-15 cm/pc
Whole shell

Tray 1 kg

Roe-off scallops, small

REF = SCA ROFF

Aequipecten opercularis
60/80 pc/lb, UK

Polybag 800 g

NATURAL | 100 %
TASTE | PURE
NO ADDITIVES



Roe-off scallops, big

REF = SCA ROFF (sometimes available in MSC)

Placopecten magellanicus
01/10 and 10/20 pc/lb, USA

Polybag 800 g

MSC Roe-off scallops, big, no additives, dry

REF = MSC SCA ROFF D

Placopecten magellanicus
10/20 pc/lb, USA
MSC certified

Polybag 800 g

NATURAL | 100 %
TASTE | PURE
NO ADDITIVES





Roe-off scallops, big

REF = SCA ROFF J

Patinopecten yessoensis
10/20 pc/lb; Japan

Polybag 800 g

Queen scallops, roe on, UK

REF = SCA QUEEN

Aequipecten opercularis
40-60 pc/lb

Polybag 800 g



Scallops, roe on, UK

REF = SCAKING12

Pecten maximus
8/14 pc/lb

Polybag 800 g

Scallops, roe on

REF = SCA HS

Argopecten purpuratus
20/30 pc/kg
Half shell

Polybag 1 kg





Crayfish à la nage, cooked

REF = ECN

Procambarus clarkii
20/30 pc/tray

Tray 800 g
(500 g crayfish, 300 g sauce)

Cooked, peeled and deveined crayfish

REF = ECPD

Procambarus clarkii
100-150 and 150-200 pc/lb

Polybag 800 g



Snails

REF = ESC

Helix lucorum
N° 8: very big, 12 pcs, tray 125 g
N° 10: belle grosseur, 48 pcs, polybag 355 g

Stuffed with herb butter
(Oven-preparation)

Rock lobster tails, raw

REF = RLT

Panulirus argus
12/14 or 14/16 oz/pc (1 oz = 28 g)

Box 4,54 kg (10 lb), IWP





Snow crab meat Korea, cooked

REF = SNW KO

Chionoecetes japonicus
30 (leg meat) / 70 (body meat)
Sandwich style

Polybag 5 lb or 450 g block, vacuum

King crab Clusters, cooked

REF = KKP

Paralithodes camtchaticus
2L (500-800 g/pc) or 3L (800-1100 g/pc)
Legs + shoulder

Mastercarton 10 or 22 kg



King crab sections, cooked

REF = KKC

Lithodes santolla
800-1000 g/pc, cooked in brine
3 legs, 1 claw and shoulder

Mastercarton 10 to 15kg



Scampi/Norway lobster, raw

REF = LG

Nephrops norvegicus
4/8 up to 16/20 pc/unit

Tray 800 g







Surimi



Surimi chunks

REF = SRCKS K/P

Colours: red (king) or orange (paprika)
Surimi content 33 or 45 %
Recipe without wine

Polybag 1 kg or 2,5 kg (only red 33%),
vacuum

Surimi shrimps

REF = SR SR

Colours: red (king) or orange (paprika)
25 g/pc – surimi content 50 %
Recipe without wine

Polybag 1 kg



Surimi sticks

REF = SRSTSN(P)

Colours: red (king) or orange (paprika)
 ± 15 g/pc (± 7 cm) – surimi content 33 %
Recipe without wine

Polybag 250 or 500 g (only king), IWP,
vacuum



Surimi sticks sushi maki

REF = SRSTMAKI

Colour : red (king)
18 cm/pc – surimi content 53 %
Recipe without wine

Polybag 500 g (30 pcs) , IWP, vacuum





Other products



Scallop shells

REF = SCA

Pecten maximus

11-11,5 cm

Empty, cleaned

Carton = 350 pieces

Seaweed salad Wakame

REF = SEAW

Undaria pinnatifida

Tradional seaweed salad including:
Seaweed (80 %), agar agar, mushrooms,
sesame seed & chilli pepper

Polybag 250 g or 1 kg



Seaweed salad Wakame

REF = SEAWK

Undaria pinnatifida

Tradional seaweed salad including:
Seaweed (75 %), agar agar, sugar, mirin,
vinegar, mushroom, sesame seed,
sesame oil, chili pepper, salt

Polybag 250 or 1 kg

Edamame, cooked

REF = EDAM

Glycine max

150-200 pc/100 g

Green soybeans, cooked

Polybag 400 g





Edamame in pod, cooked, no salt

REF = EDAM P

Glycine max

± 120 pc/bag

Green soybeans in pod, cooked, no salt

Only the beans can be eaten.

Polybag 400 g

Edamame in pod, cooked, salted

REF = EDAM PS

Glycine max

± 120 pc/bag

Green soybeans in pod, cooked & salted

Only the beans can be eaten

Polybag 400 g



Frog legs

REF = FLO.8 ...VN

Hoplobatrachus rugulosus

Origin Vietnam

6/8 up to 16/20 pc/lb

Polybag 800 g, IWP

Frog legs yoga style

REF = FLO.8 13YVN

Hoplobatrachus rugulosus

Origin Vietnam

13/15 pc/lb

Polybag 800 g, IWP





Frog leg meat

REF = FLM

Hoplobatrachus rugulosus
Origin Vietnam

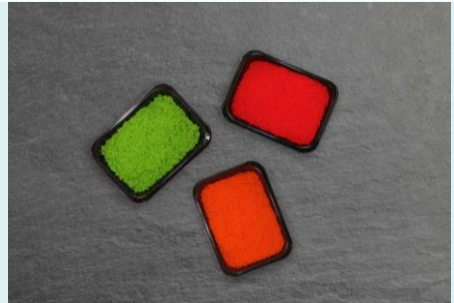
Polybag 800 g

Masago (capelin roe)

REF = MAS

Mallotus villosus
Colors : green (wasabi), orange, red

Tray 400 g



Freezer bags

REF = DTV

100 pieces

Our packaging





www.hottlet.be



HOTTLET FROZEN FOODS NV
T +32 3 451 31 31
sales@hottlet.be
www.hottlet.be