



ASC-MSC Products



ASC Registration number
ASC-C-00314

ASC is an international label for sustainable seafood from aquaculture/growth. The label guarantees that the seafood was grown with the lowest possible impact on the environment and according to strict rules; and also traceable throughout the chain.



MSC Registration number
MSC-C-52790

MSC is an international label for sustainable seafood from fishery. The label guarantees that the seafood was caught with respect for man and nature; and also traceable throughout the chain.



ASC Peeled vannamei shrimps

REF = ASC PD

Penaeus vannamei
16/20 pc/360 g (deveined)

Polybag 800 g

ASC Nobashi Ebi shrimps, raw

REF = ASC NOBA

Penaeus vannamei
13-14 cm/piece
Peeled, deveined and stretched, tail-on

30 pc/tray (360 g), vacuum



ASC Shrimp skewer 90 g

REF = ASC SKE1

Penaeus vannamei
9/10 pcs/skewer
Pd shrimps single pierced, with pan handle

Polybag 900 g (10 skewers x 90 g)

ASC Shrimp skewer 90 g

REF = ASC SKE2

Penaeus vannamei
11/12 pcs/skewer
Pd shrimps single pierced, with pan handle

Polybag 800 g (9 skewers x 90 g)





MSC Atlantic cod loins

REF = MSC FCODL

Gadus morhua
150-200 g/pc

Polybag 900 g

MSC Haddock loins

REF = MSC FHADL

Melanogrammus aeglefinus
130-180 g/pc

Polybag 900 g



ASC Pangasius fillets

REF = ASC FPNG

Pangasius hypophthalmus
170-230 g/pc

Polybag 800 g

NATURAL	100 %
TASTE	PURE
NO ADDITIVES	

ASC Tilapia fillets

REF = ASC FTIL

Oreochromis niloticus
140-200 g/pc

Polybag 800 g

NATURAL	100 %
TASTE	PURE
NO ADDITIVES	





MSC Yellowfin sole filets

REF = MSC FYF 85

Limanda aspera
85-140 g/pc

Polybag 800 g

MSC Yellowfin sole rolls

REF = MSC FYFM

Limanda aspera
40-60 g/pc

Polybag 800 g



MSC Wild chum salmon portions

REF = MSC FSAP 150

Oncorhynchus keta
(Pacific keta salmon)
140-160 g/pc

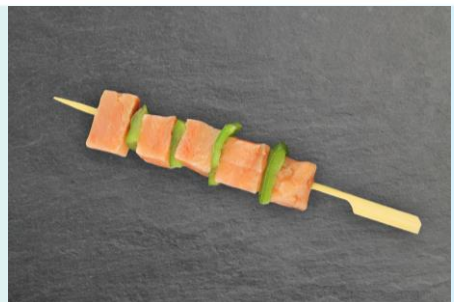
Polybag 900 g

MSC Salmon skewer 80 g

REF = MSC SKSLMP

Oncorhynchus keta
Skewer with wild salmon and green
pepper, with pan handle

Polybag 800 g (10 skewers x 80 g), IWP





MSC Roe-off scallops

REF = MSC SCA ROFF 10/20

Placopecten magellanicus
10/20 pc/lb, USA

Polybag 800 g

MSC Roe-off scallops, dry

REF = MSC SCA ROFF 10/20D

Placopecten magellanicus
10/20 pc/lb, USA

Polybag 800 g

NATURAL | **100 %**
TASTE | **PURE**
NO ADDITIVES



Our packaging

